

## CAM75 4K Professional PTZ Camera

4K / NDI®|HX2 / 12x Optical Zoom



### Product Features

#### ● 4K UHD

Use 1/2.5-inch high-quality UHD CMOS sensor with a maximum of 8.51 million pixels can realize 4K (3840x2160) ultra-high-resolution high-quality images. And downward compatible with 1080p, 720p and other resolutions.

#### ● Multiple Interfaces

Support HDMI and 3G-SDI interface, effective transmission distance of 3G-SDI is up to 150 meters (1080P30). HDMI, LAN or 3G-SDI, LAN can output 2 high-definition digital signals at the same time.

#### ● NDI®|HX2 1

NDI®|HX2 has the characteristics of low delay and plug and play, which is convenient for project implementation and deployment. It has good ecology and supports the simultaneous transmission of audio, video and control commands. It is a new generation of network video transmission mode.

#### ● 12x Optical Zoom + 80.8° Wide-angle Lens

It adopts 4K ultra long focal lens with high quality and 8 million ultra-high resolution, 12x optical zoom, and the maximum field angle is 80.8°.

#### ● HDMI1.4b

Support HDMI 1.4b interface, which can directly output 4K/60P uncompressed digital video.

#### ● Low Illumination

The application of 3D noise reduction algorithm greatly reduces image noise. Even under the condition of ultra-low illumination, it still keep the picture clean and clear, and the SNR of image is as high as 55dB.

#### ● Remote Control

Support variety of control methods, you can use RS232, RS485, network and USB to control the camera.

#### ● Local Storage

Support U disk local storage, local recording directly without NVR.

#### ● Low Power Sleep

It supports low-power sleep/wake-up and consumes less than 400mW in sleep mode.

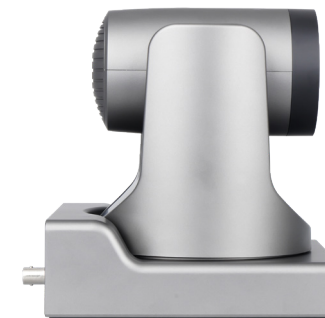
#### ● Smart Exposure

Effectively solve the impact of projection, TV and other equipment on shooting people.

### Product Specifications

#### Camera

Signal System	HDMI : 4K/30, 4K/29.97, 4K/25; 1080p/60, 1080p/59.94, 1080p/50, 1080p/30, 1080p/29.97, 1080p/25, 1080i/60, 1080i/59.94, 1080i/50, 720p/60, 720p/59.94, 750p/50; 3G-SDI: 1080p/60, 1080p/59.94, 1080p/50, 1080p/30, 1080p/29.97, 1080p/25, 1080i/60, 1080i/59.94, 1080i/50, 720p/60, 720p/59.94
Sensor	1/2.5 inches, CMOS, Effective Pixels: 8.51 Megapixels
Scanning Mode	Progressive
Focal length	12x, f = 3.47mm ~41.65mm, F 1.84 ~ F 3.72
Digital Zoom	16x
Minimum Illumination	0.5 Lux @ (F1.8, AGC ON)
Shutter	1/30s ~ 1/10000s
White Balance	Auto, Indoor, Outdoor, One Push, Manual, VAR
Backlight Compensation	Support
Digital Noise Reduction	3D Digital Noise Reduction
SNR	≥ 55dB
Horizontal FOV	80.8° ~ 7.5°
Vertical FOV	49.9° ~ 4.3°
Pan Angle	±170°
Tilt Angle	-30° ~ +90°
Pan Speed	1.7° ~ 100° /s
Tilt Speed	1.7° ~ 69.9° /s
Image Flip	Support
Image Freeze	Support
PoE+	Support
Preset Position	255
Preset Accuracy	0.1°



#### Network Features

Video Compression	H.264 / MJPEG / H.265
Video Stream	First Stream, Second Stream
First Stream Resolution	3840x2160, 1920x1080, 1280x720, 1024x576 etc.
Second Stream Resolution	720x576, 720x480, 320x240 etc.
Video Bit Rate	First Stream: 32kbps~51200kbps Second Stream: 32kbps~20480kbps
Bit Rate Control	VBR, CBR
Frame Rate	50Hz: 1fps~50fps, 60Hz: 1fps~60fps
Audio Compression	AAC, G711A
Audio Bit Rate	96Kbps, 128Kbps
Protocols	NDI® HX2,SRIT,CP/IP,HTTP,RTSP,RTMP/RTMPS,Onvif,DHCP,Multicast,GB/T 28181, etc.

#### Interfaces

HD Output	1x HDMI: Version 1.4b; 1x 3G-SDI: BNC, 800mVp-p, 75Ω, as per SMPTE 424M standard
Network Interface	1x RJ45: 10M/100M/1000M adaptive Ethernet
Audio Interface	1 x Line In: 3.5mm Jack; 1 x Line Out: 3.5mm Jack;
USB Interface	1 x USB2.0,Type-A
Control Interface	1 x RS485: 2pin phoenix port, Max Distance: 1200m, Protocol: VISCA / Pelco-D / Pelco-P; 1 x RS232 IN: 8pin Mini DIN, Max Distance: 30m, Protocol: VISCA / Pelco-D / Pelco-P; 1 x RS232 OUT: 8pin Mini DIN, Max Distance: 30m, Protocol: VISCA only
Power Interface	JEITA type (DC IN 12V)

#### General Specifications

Input Voltage	DC 12V/PoE+(802.3at)
Input current	1.5A (Max.)
Operating Temperature	-10 ~ 40° C
Storage Temperature	-40 ~ 60
Power Consumption	13W (Max.)
Dimension	169mm x 142mm x 175mm
Net Weight	1.6Kg